



Application Development for Mobile and Ubiquitous Computing

Seminar Task 3 First Presentation

GroupNo. 9

Team: Aleksandra Parol, Rafał Majorczyk

Our mobile application offers you the following features for managing university career:

✚ Enroll for various lectures, such as exercise courses, seminars, practical courses etc.

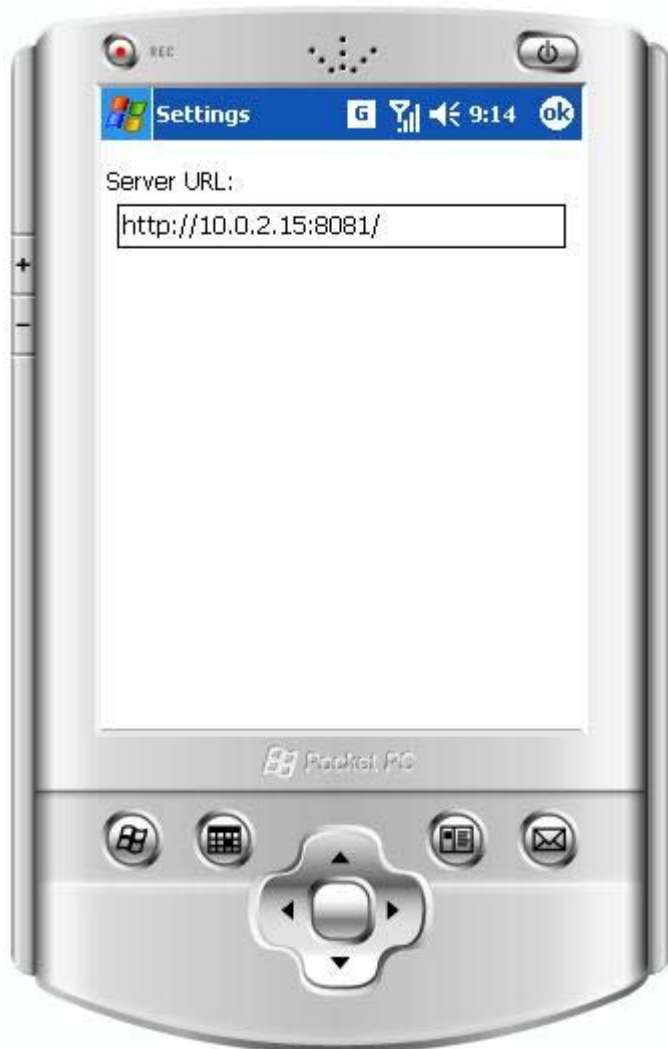
✚ Check your personal timetable showing all your lectures you are enrolled to.

How does it work so far:

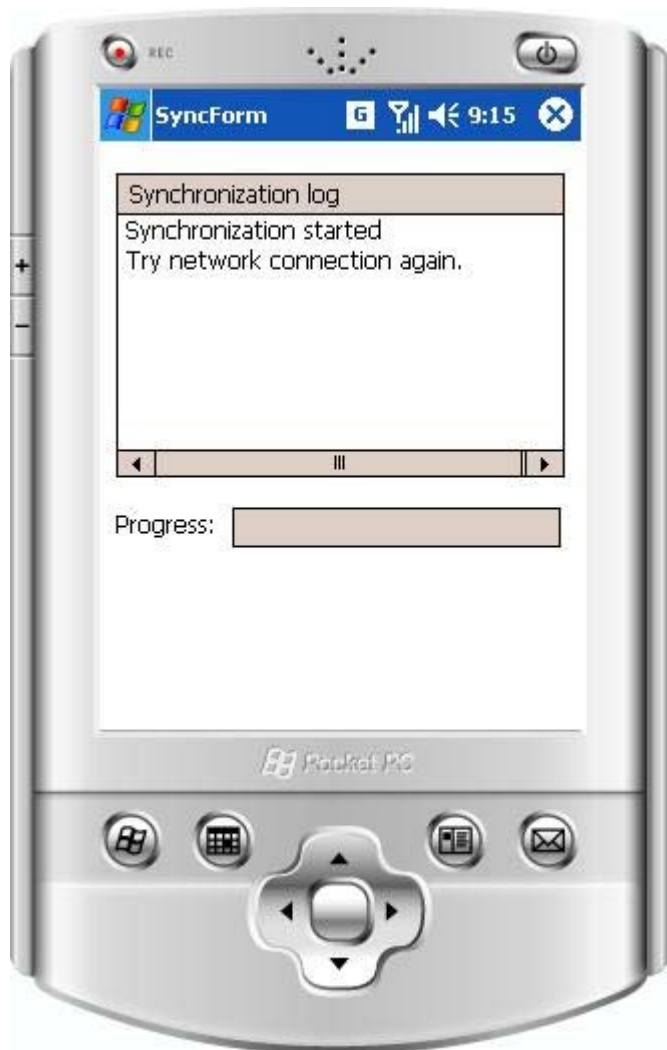
- ✚ logs in with university e-mail and password
- ✚ Enters the URL of the server
- ✚ Synchronize with database
- ✚ Look up through the list of owned courses on given semester
- ✚ possibility to add/remove course
- ✚ display details of subject



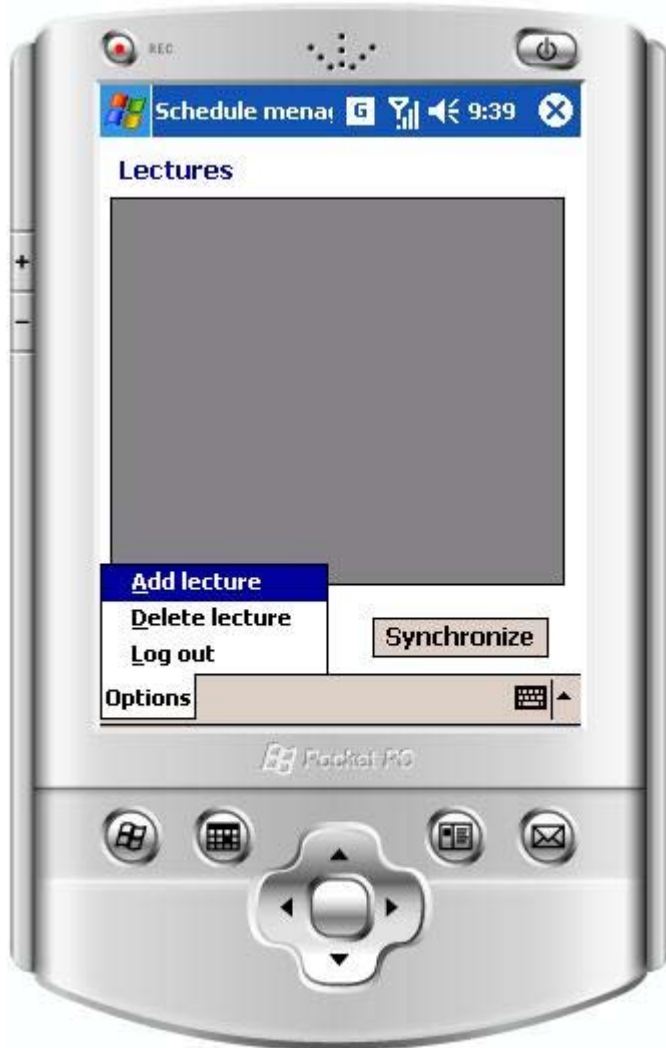
- ✚ Log in - Student logs in with university e-mail and password



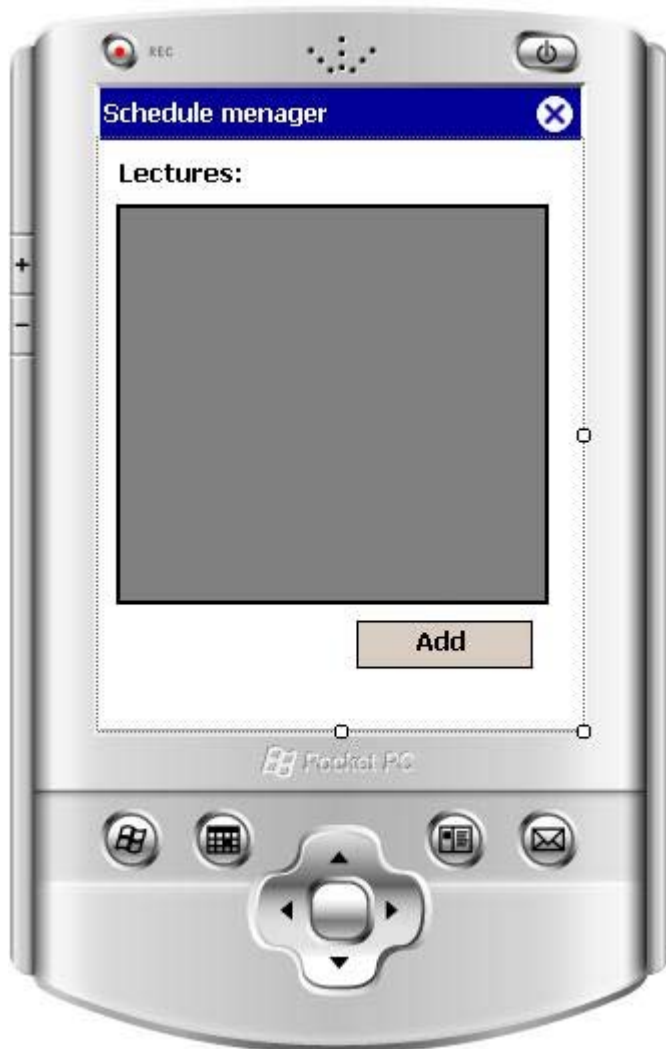
- ✚ Log in - student logs in with university e-mail and password
- ✚ Server URL – address of the server with Database



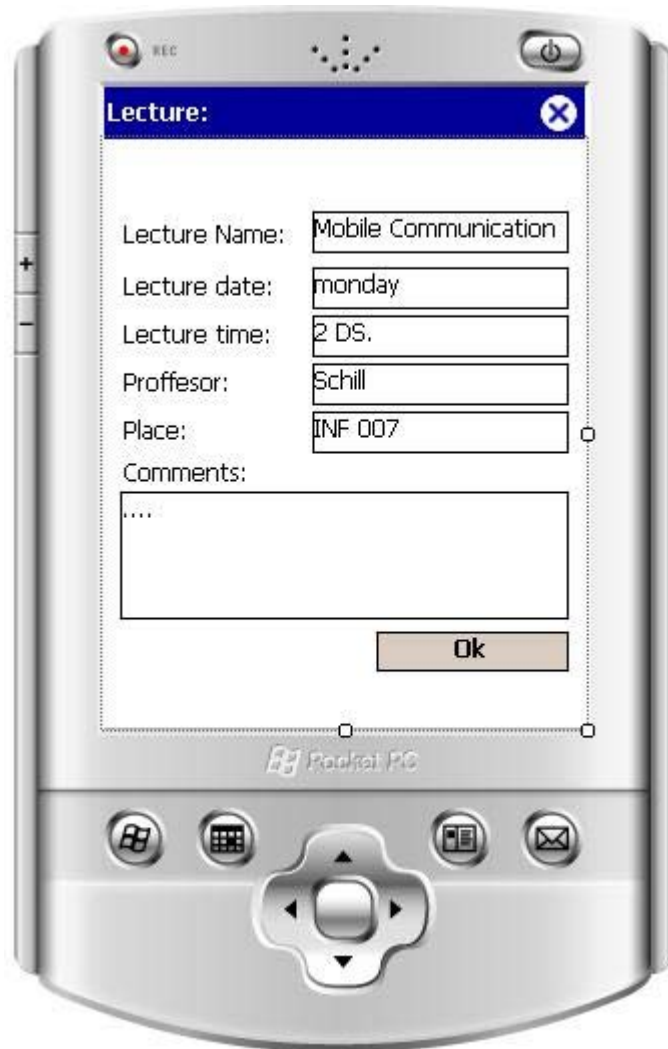
- ✚ Log in- student logs in with university e-mail and password
- ✚ Server URL – address of the server with Database
- ✚ Synchronization with the server



- + Log in- student logs in with university e-mail and password
- + Server URL – address of the server with Database
- + Synchronization with the server
- + Overview of owned lectures



- + Log in- student logs in with university e-mail and password
- + Server URL – address of the server with Database
- + Synchronization with the server
- + Overview of owned lectures
- + List of subjects that student can add/remove

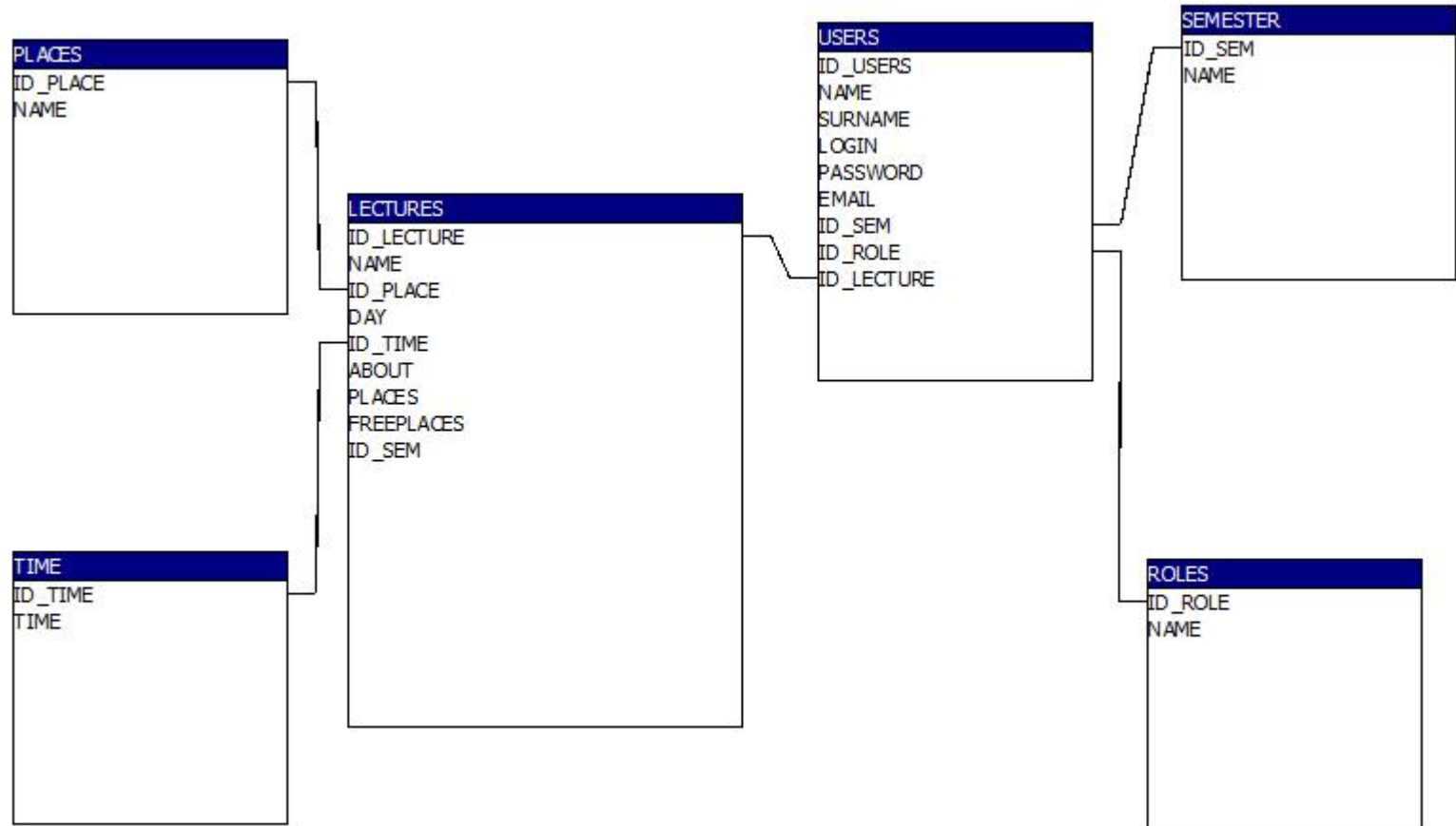


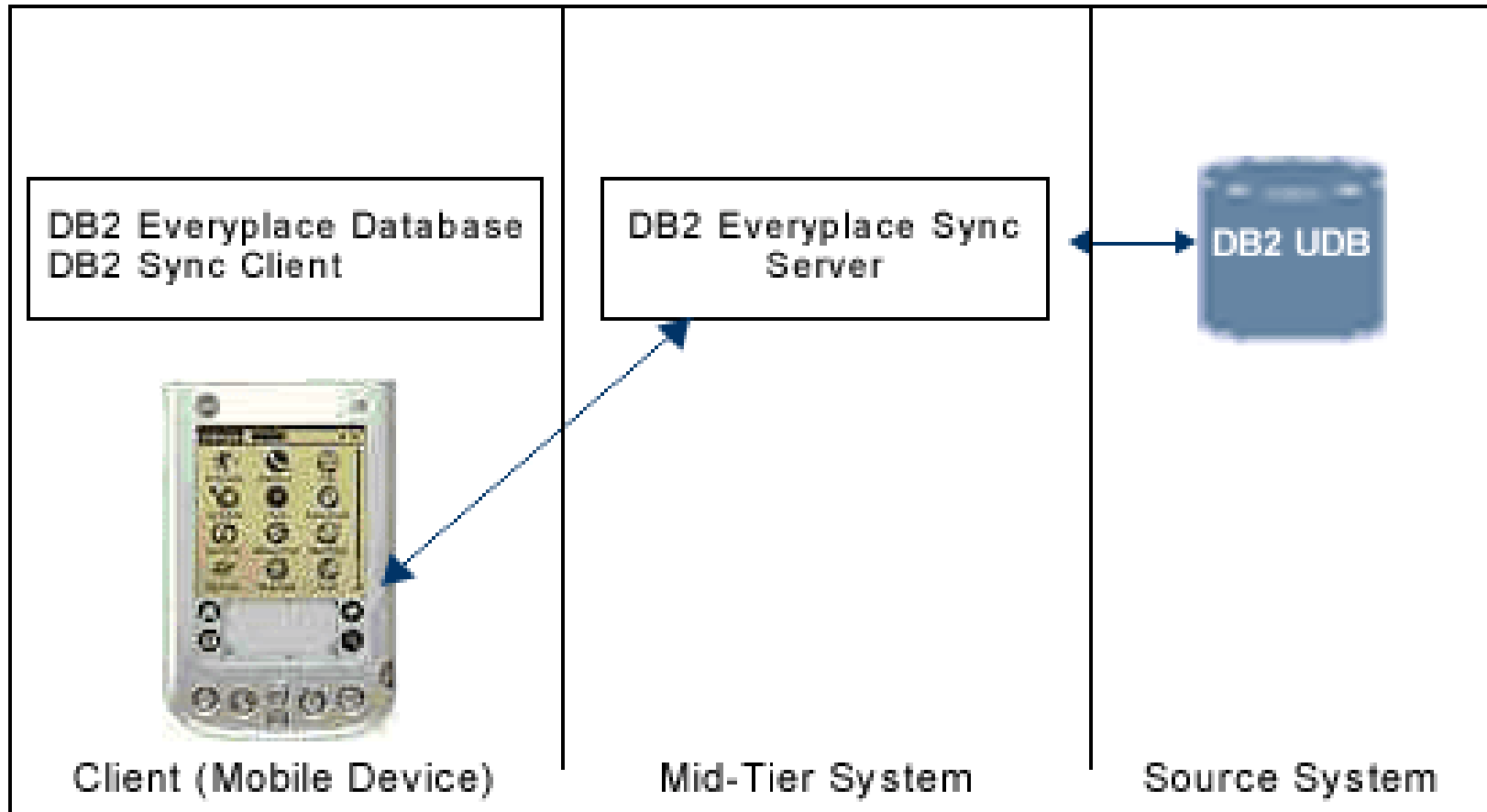
- + Log in- student logs in with university e-mail and password
- + Server URL – address of the server with Database
- + Synchronization with the server
- + Overview of owned lectures
- + List of subjects that student can add/remove
- + Detailed view of course

 Microsoft .NET Compact Framework

 IBM DB2 Everyplace v9

 WLAN





+ Privacy:

- only student is able to manage his timetable via his account

+ Disconnections:

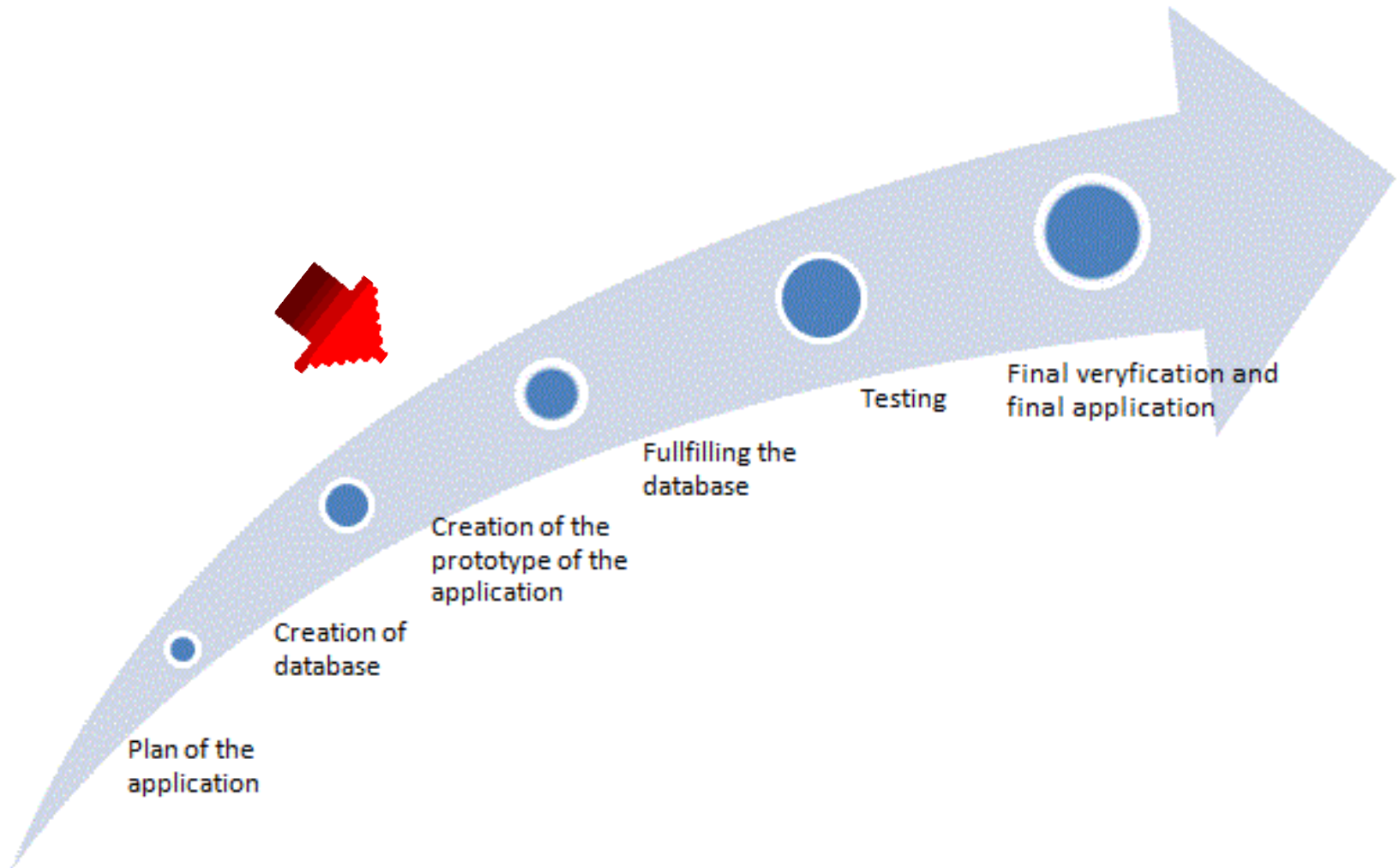
- synchronization with other clients

+ Synchronization (Client):

- courses in offer (Add/Delete)
- sign in for course -> takes one place from the list
- sign out from the course -> returns one place to the list
- when the list is full subject is not available

+ Our challenges:

- Know and better understand environment of .Net compact framework and IBM DB2
- check its usability on mobile devices



Thank you for your attention!