



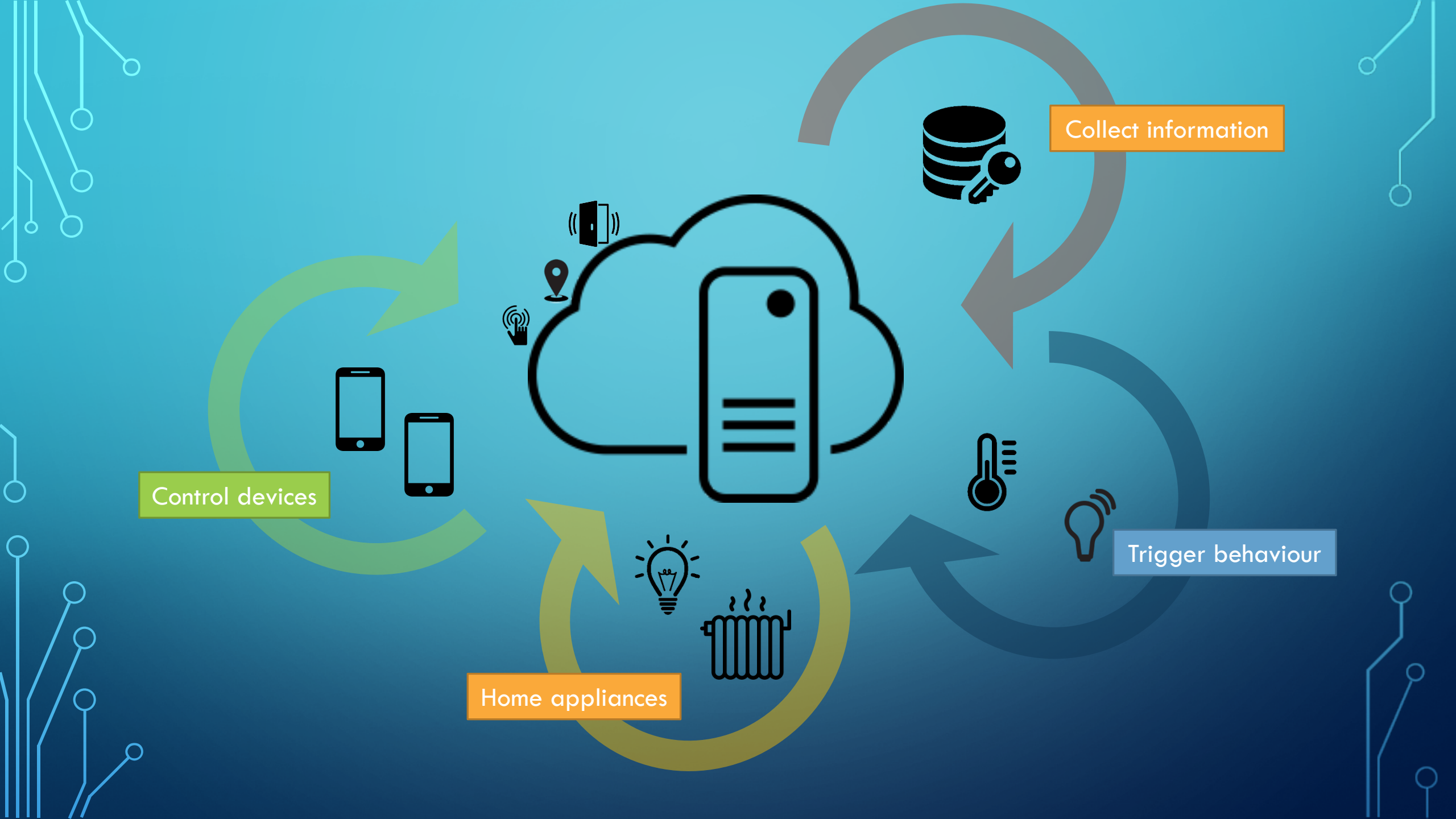
# Switchit!

A PERSONALIZED HOME-AUTOMATISATION-SYSTEM

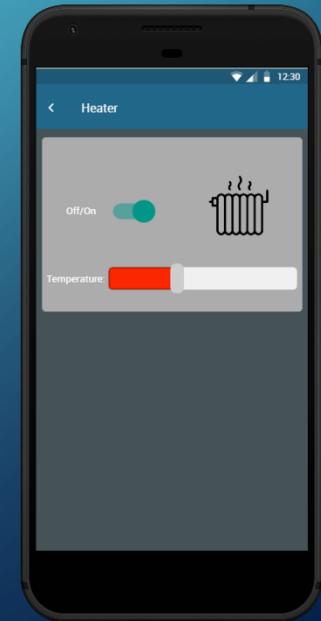
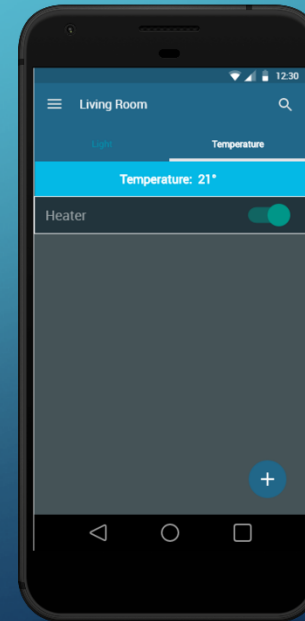
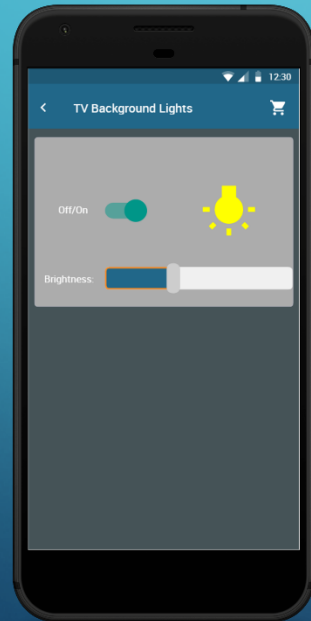
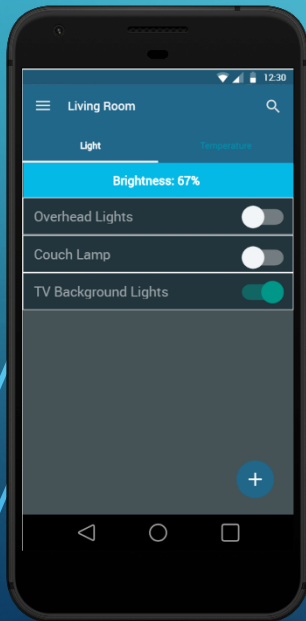
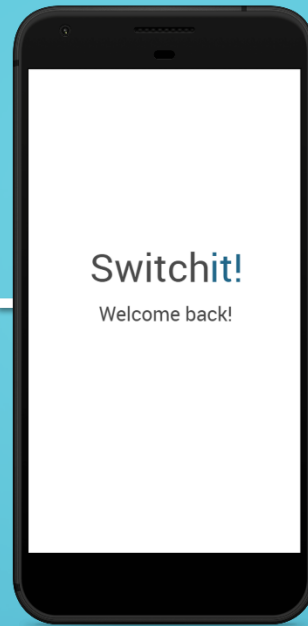
CONTROL YOUR DEVICES FROM EVERYWHERE

CREATE CUSTOM PROGRAMS FOR YOUR HOME

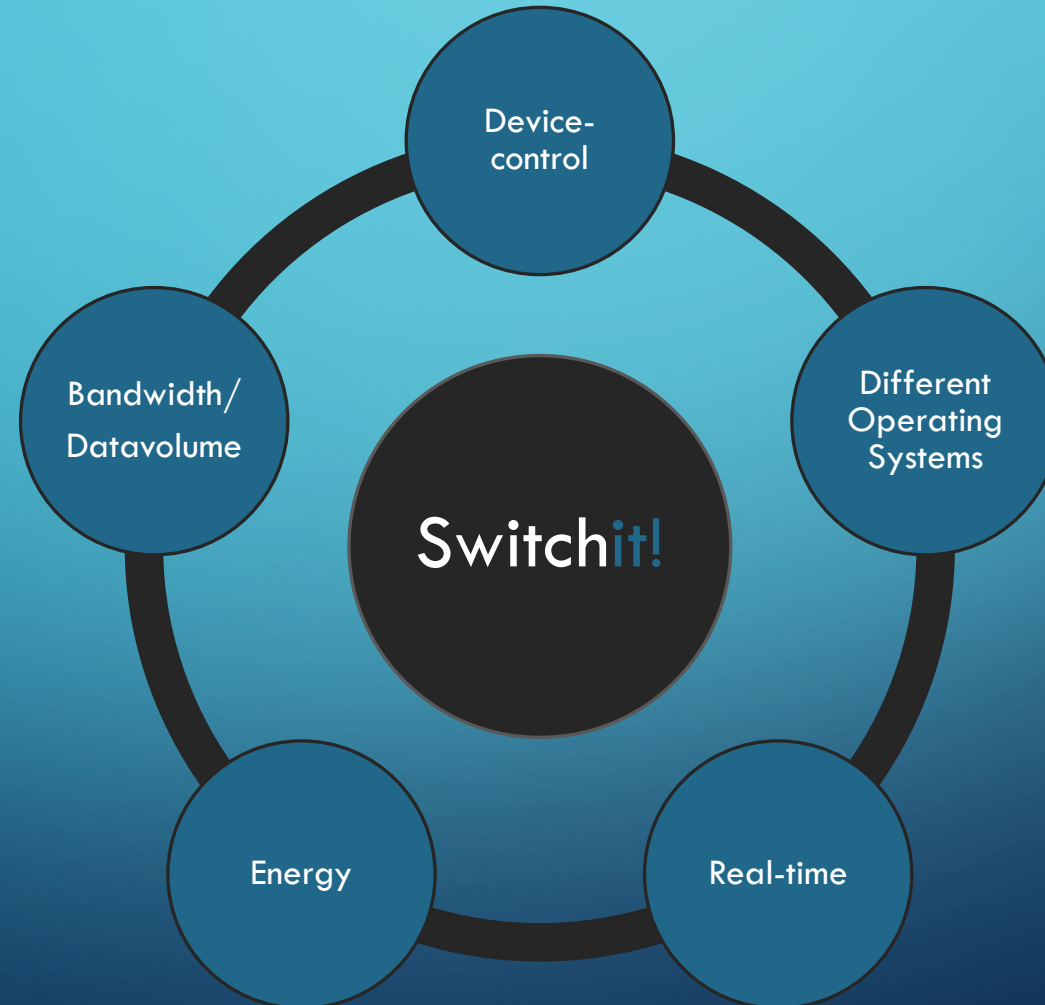
GATHER INFORMATION ABOUT YOUR HOME-ENVIRONMENT



# USE CASE: CONTROLLING HOME DEVICE



# MOBILE & UBIQUITOUS CHALLENGES





# TECHNOLOGIES TO USE

- Webservice / RESTful server: `nodejs`
- OS: `React-Native`
- Sensor-/Device-protocol: `Mqtt`

# WORK PLAN

- Navigation prototyp
- Setting up the Server & connect some home devices & sensors
- Connect the control devices to the server
- Adjust the network traffic and try to comply with the mobile & ubiquitous challenges



Thank you for your attention!