

Application Development for Mobile and Ubiquitous Computing

Final Presentation

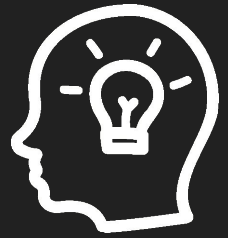


Scout

Group 8

- José Duarte
- Miguel Carrega

Idea



*Share the best of
your trips!*

Register

Vodafone.de 25% 16:38

Username

User

Password

....

Repeat Password

....

or Sign In

REGISTER

Dashboard Management

Vodafone.de 22% 16:20



TU Dresden

Tue, Jan 29, '19

Post trip online

Show trip on the map

Delete trip

Trip Gallery

No service 22% 16:20



Picture Viewer

Vodafone.de 22% 16:20



3968x2976

Faculty Entrance

Germany

Tue, Jan 29, '19

Sachsen, Dresden

Nöthnitzer Straße Fakultät Informatik

Lat: 51.026° Lon: 13.723°

Trip Map

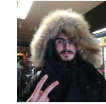
Vodafone.de 30% 21:53



Google

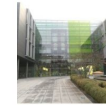
Global Feed

Vodafone.de 97% 15:50



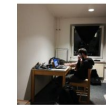
Dresden

Tue, Jan 29, '19



TU Dresden

Tue, Jan 29, '19



Gutz

Mon, Jan 28, '19





Context Information

Connection State

- If the app has no connection or a poor connection to the internet it's functionality should be restricted

Battery Status

- In order to save battery the app should make careful use of the device resources

Location Services

- Show user trips on the map
- Capture user's location when the picture is taken



Adapt to Network State

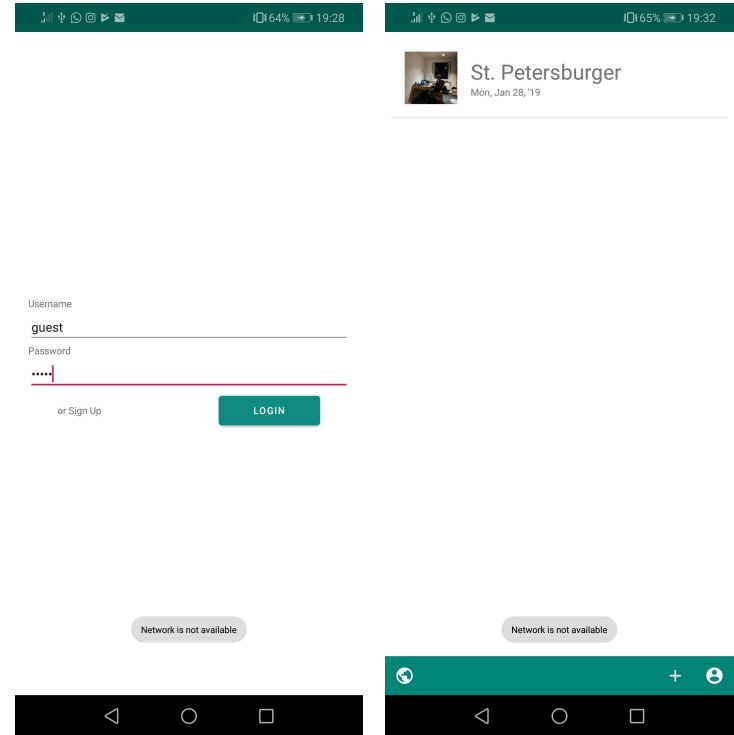
Under low connectivity

- Do not download images
- Uploads are scheduled

Offline

- Features such as creating trips and taking pictures are still available
- Any feature that requires an active connection is inaccessible

```
// Also checks for online connection
if (context.isNetworkFast()) {
    Picasso.get().load(...)
    // ...
}
```



```
Constraints.Builder()
    .setRequiredNetworkType(
        NetworkType.CONNECTED
    ).build()
```



Power Consumption

Low battery (< 20%)

- Schedule uploads
- No GPS

Normal battery (> 20%)

- High GPS precision

```
Constraints.Builder()  
    .setRequiresBatteryNotLow(true)  
    .build()
```

```
if (getBatteryLevel() > LOW_BATTERY) {  
    getCurrentLocation(mMap)  
}
```

Location Services



Showing trips on the map

- Seeing simultaneous trips is overwhelming
- Show only one trip at a time
- Locate photos on the map

Vodafone.de 96% 15:58



3968x2976

Title

Germany Tue, Jan 29, '19
Sachsen, Dresden
Nöthnitzer Straße Fakultät Informatik
Lat: 51.025° Lon: 13.723°

Vodafone.de 58% 14:17



Germany
Sachsen, Dresden
Nöthnitzer Straße Fakultät
Informatik
Lat: 51.025° Lon: 13.723°



Germany
Sachsen, Dresden
Nöthnitzer Straße Fakultät
Informatik
Lat: 51.025° Lon: 13.723°

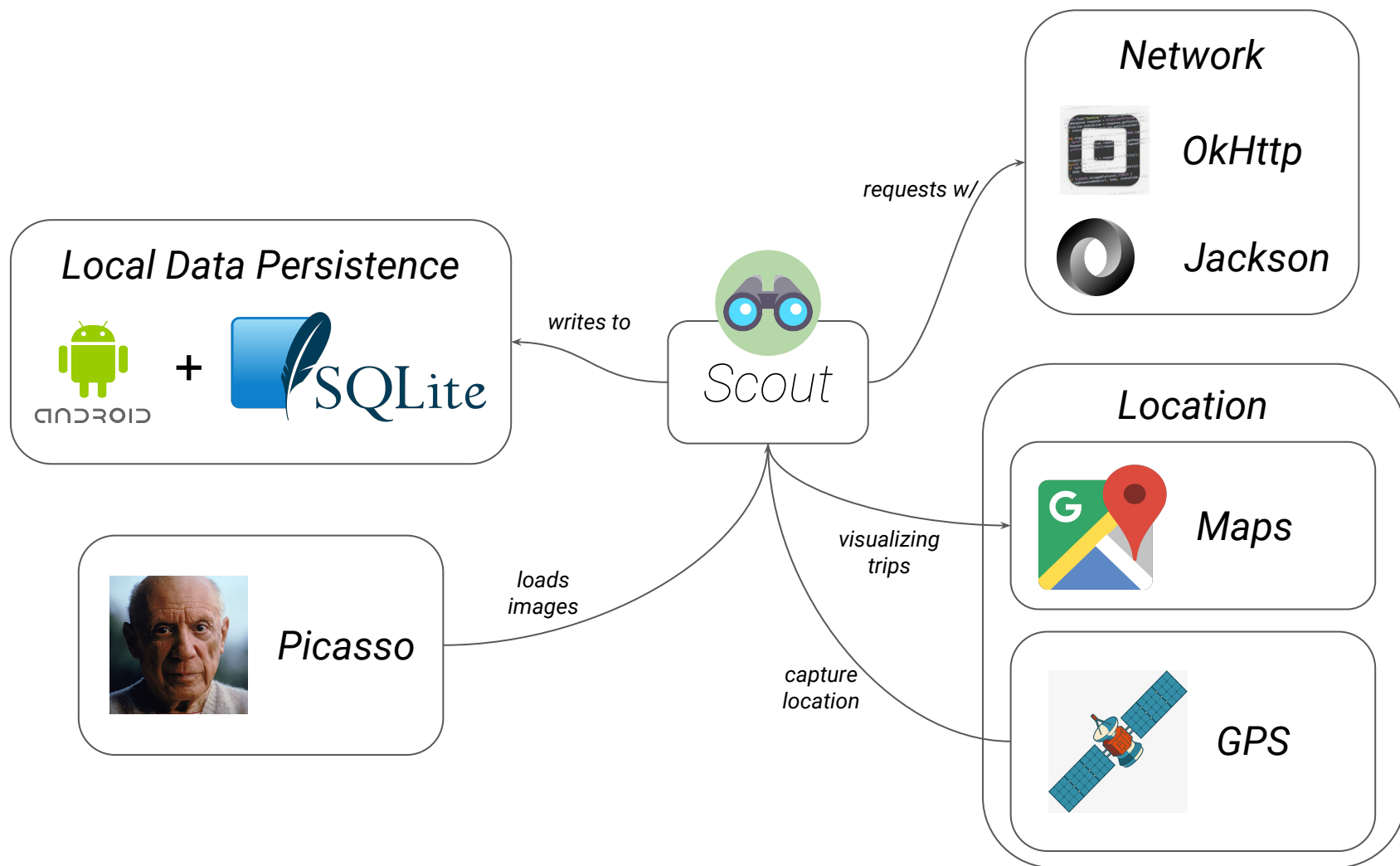


Germany
Sachsen, Dresden
Nöthnitzer Straße Fakultät
Informatik
Lat: 51.026° Lon: 13.723°

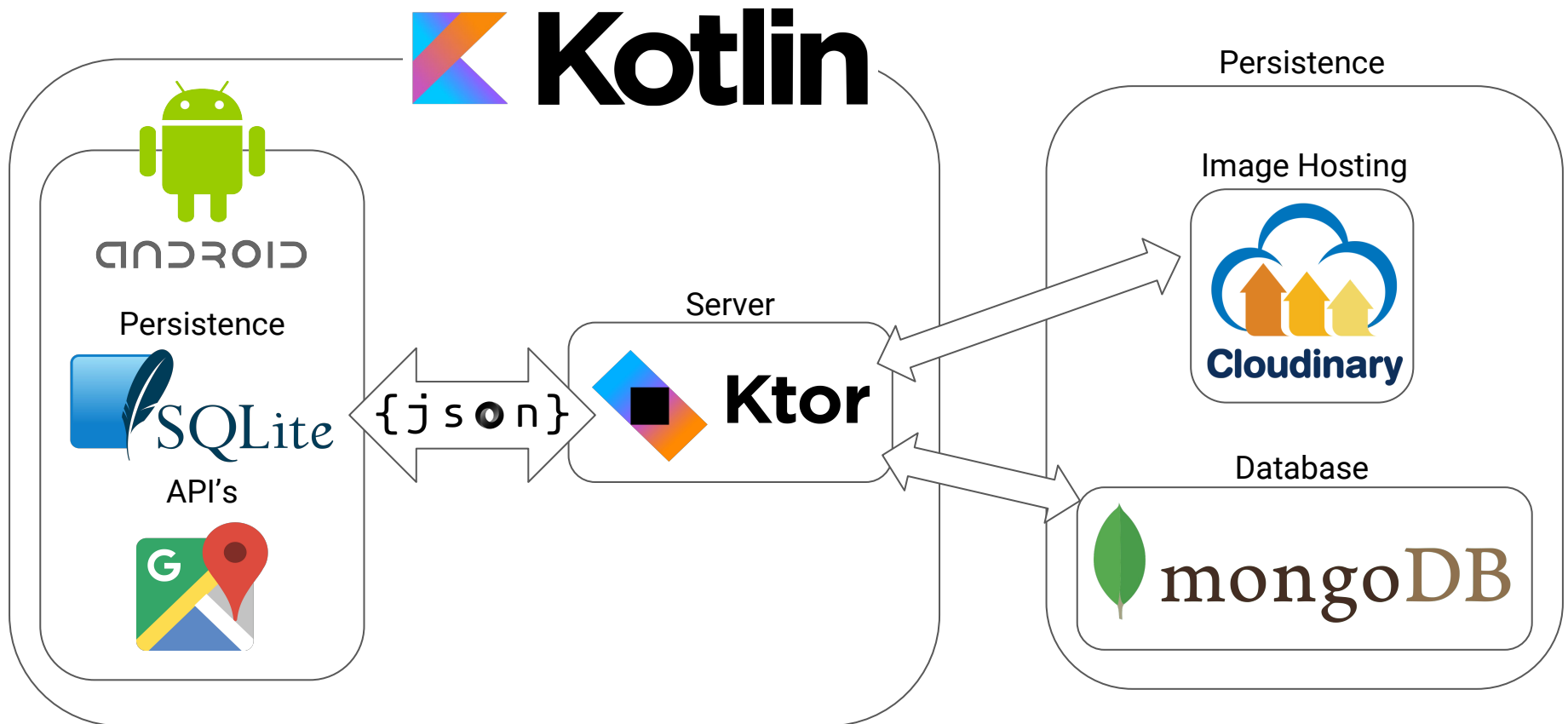




Android Architectural Overview



Full-Stack Overview



Conclusion



Problems

- Getting up to speed with Android & Kotlin

Lessons Learned

- Fully read the documentation before diving in
- All technologies used were new to us

Next Steps

- Polish the interface
- Modularize UI components with Fragments
- Complete the functionality of the app